

How to Unbox and Setup your Virtual Pinball Table

Once you get your cabinet, find some place with plenty of room to unbox/crate cabinet.



Remove the wood panels.



Remove the soft packing foam. Be careful not to scratch cabinet with a knife or scissors.

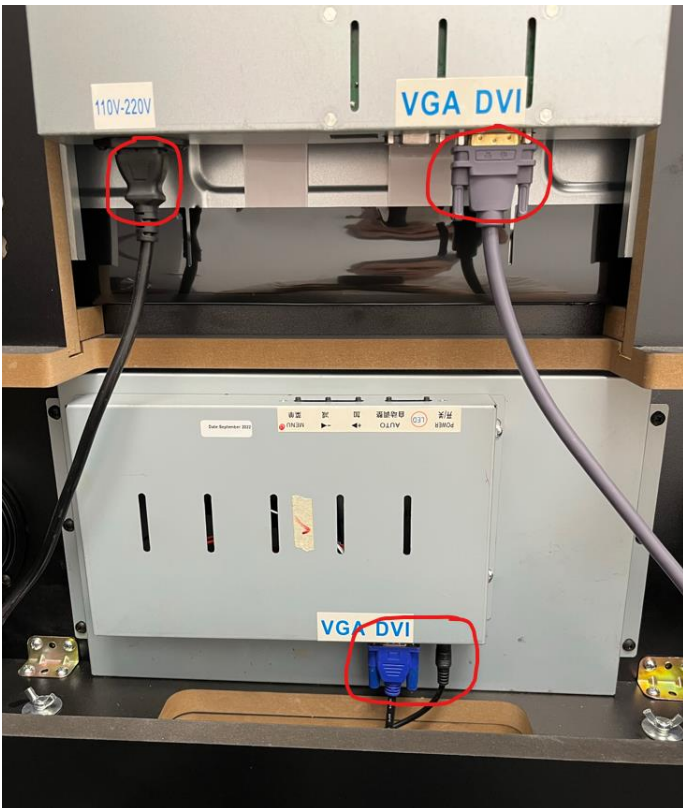


Lift Pinball Head up, place a hand in front of to make sure the glass cover over the 32" LCD doesn't fall out.

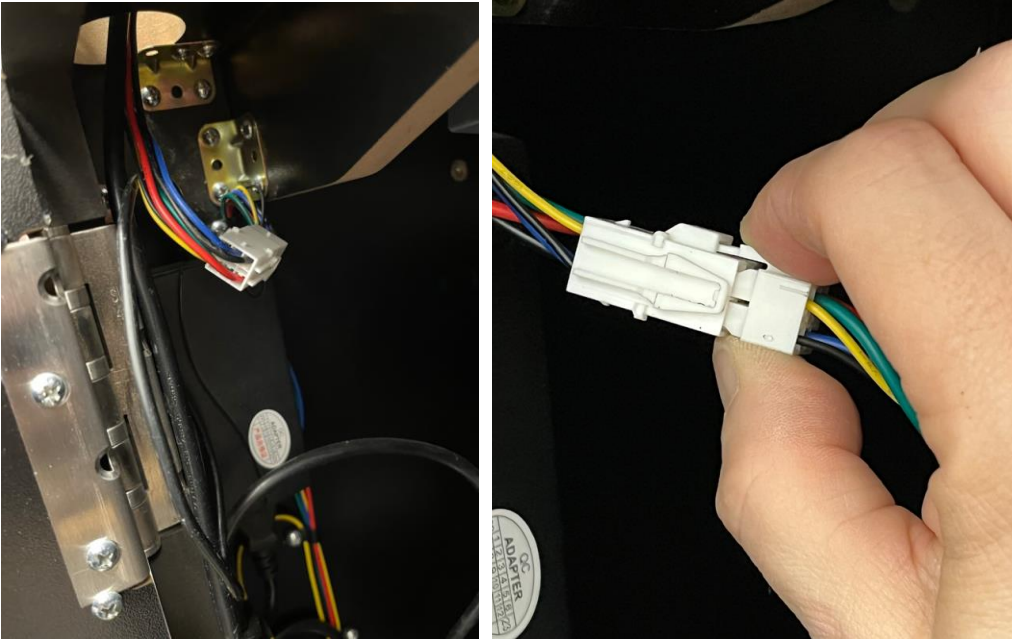


The Head of the cabinet is 32" wide. The average door in Canada is 31.5" wide. If you prefer to remove the head to move into your house, follow steps below.

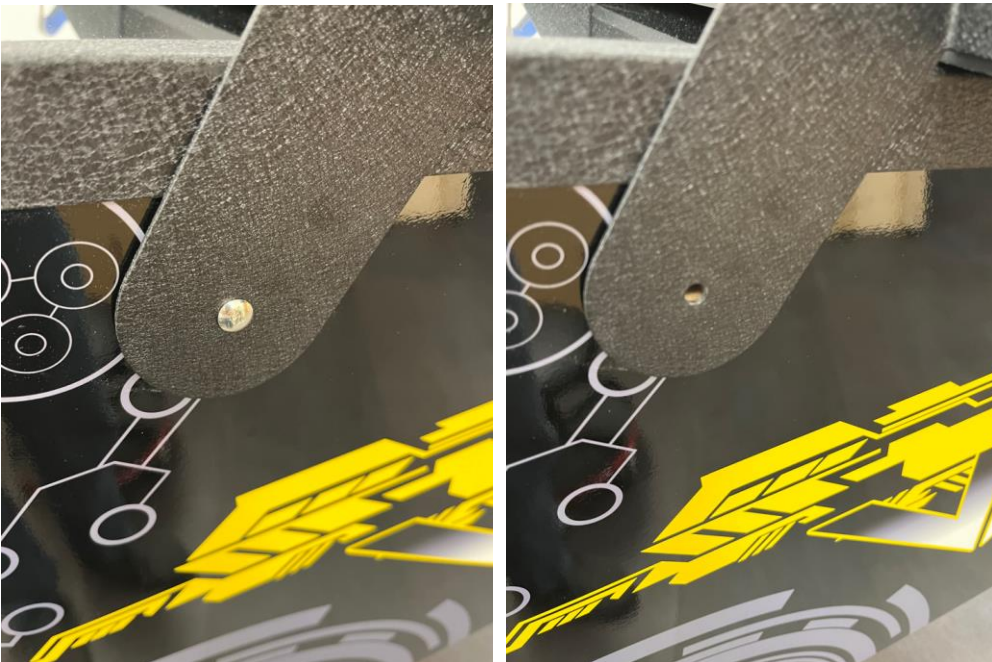
Disconnect the DVI and Power cord from the top 32" monitor, then the VGA and power cord from the 15.6" monitor.



Disconnect the Molex audio connector. Pinch the end to release connector.



Remove the screws from the hinges.



Now for the other side.



Carefully remove the head and rest somewhere safe. Two people are required to remove the head.



Place the pinball cabinet on its back and install the front legs. Each legs requires 2x bolts.



Lean forward.



Lift up the back of the cabinet and rest on a chair or stool. Now you can install the rear legs.

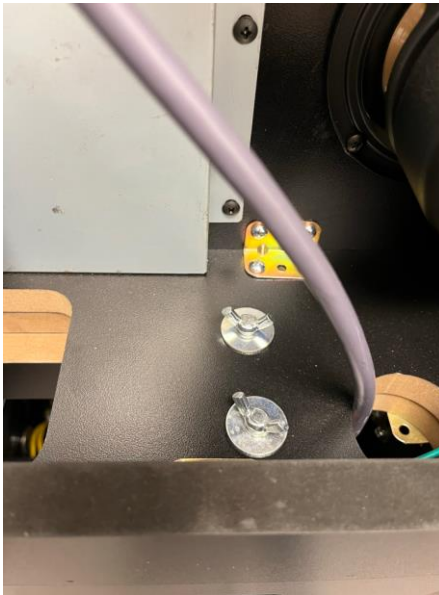
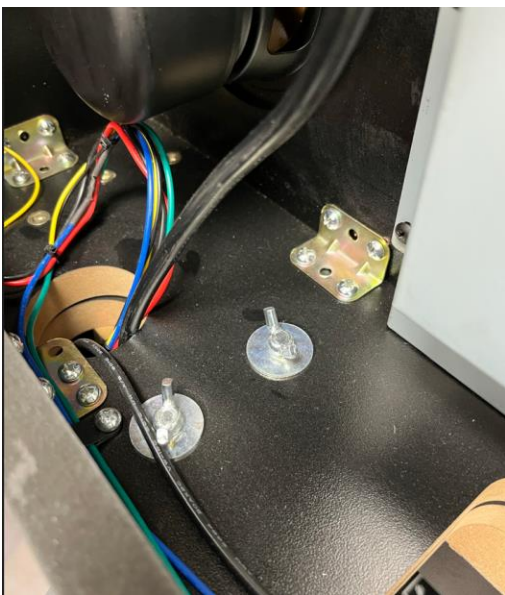


Make sure all 8x bolts are properly fastened.

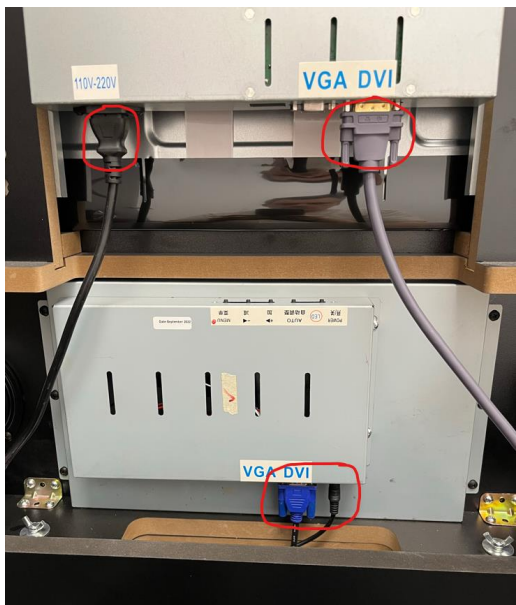




Place the head back on the cabinet. Insert the 2x hinge screws. Fasten Head down with 4x Wing Bolts. 2 on the left and 2 on the right.



Plug in the DVI, VGA, power cords and plug in the Molex audio connector.



Main Power button is on the rear door of the cabinet. Turn it on. Power to turn on or off the cabinet is located on the front right side. The power down button is located on the front left side. This button is to shut down after you are done playing. Then turn of the power on the front right side.



Now enjoy.

