

USER MANUAL

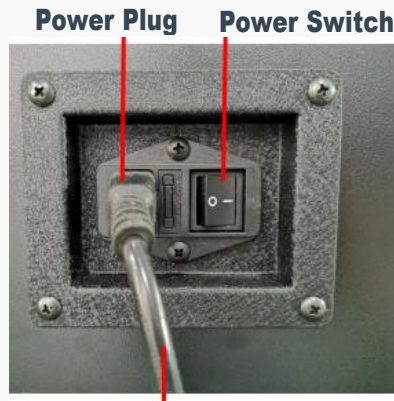
ENHANCED PINBALL



CONTENS

- 1. Setting Up**
- 2. Powering Up**
- 3. Controls**
- 4. To play a game**
- 5. To disable FX Tables**
- 6. To disable the “Coin Button”**
- 7. To change the Volume**
- 8. To adjust the shaker motor**
- 9. Adjusting the feet**
- 10. Fixing the 32” screen’s cabinet**
- 11. To change the view of Table(FX3)**
- 12. Another way to change the volume**
- 13. Adjusting the screen**
- 14. Troubleshooting**

Setting Up

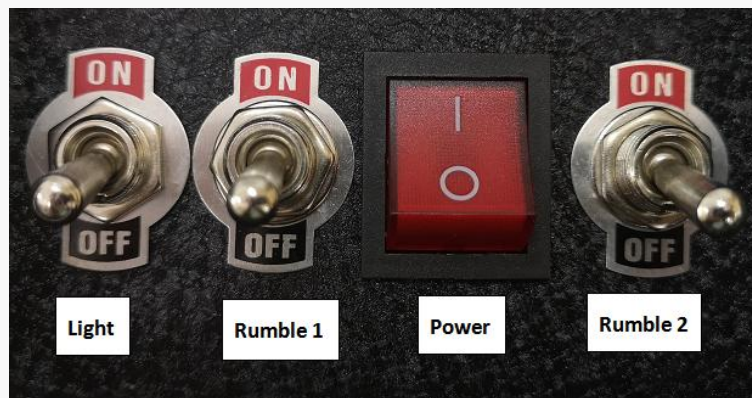


Power Cable

Powering Up

To switch the unit on, plug the power cable into a wall socket, then the connecting lead into the Power Plug on the side of the machine. Power the machine on by flipping the power switch to on. The machine will power on, and load up the games menu.

The bottom of cabinet's switches instruction:



Computer Switch Button: Press this button to turn on/off the computer. please use this button to turn off the computer to prevent the game files damage.

LIGHT Switch: Turn on/off the LED lights of the machine.

RUMBLE 1 Switch: Turn on/off the Rumble 1 Function. (8 Solenoids)

POWER Switch: Front power switch, turn on/off the whole machine 's power. it is same as the power switch of the back.

RUMBLE 2 Switch: Turn on/off the Rumble 2 Function. (2 Contactors and Shaker Motor)

Warm Tip : For the environmental protection. Unplug the power cable when you don't use the machine.

Controls



1. Left MagnaSave(game playing) Nudge Left(FX); PageLeft (game exploring)
2. Left Flipper(game playing); Left (game exploring)
- 3 . Right Flipper(game playing); Right (game exploring)
4. Right MagnaSave/Fire(game playing) Nudge Right(FX); PageRight (game exploring)
5. Select Game List/Game Menu(game exploring),Start game (game playing)



6. Plunger



7. Coin button to insert coin, for free play



8. Exit



Launch ball



Note: In FX3 Games, press Start button to choose to start a new game or continue playing game.



To play a game

Note: FX2&FX3 Table games are free play games. Can be disabled.

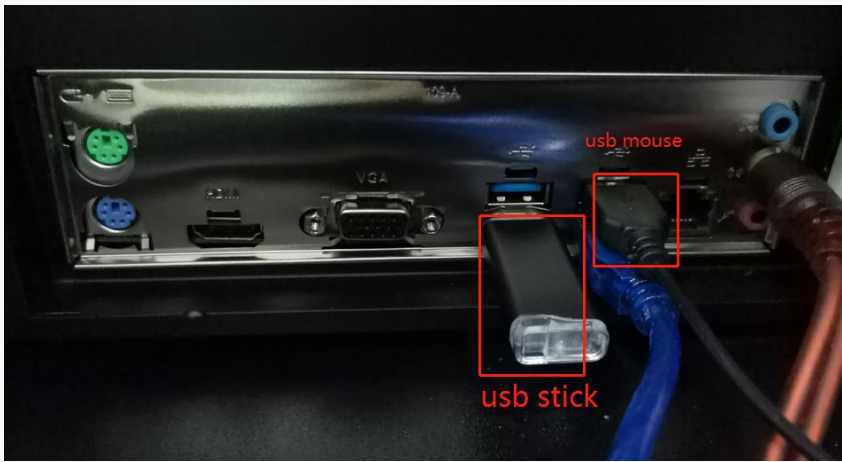
When you would like to start a new game, you can press the “1”, “2” button to choose the game. Then press the “Start” button to enter the game, press the “Coin” button to get credit or insert coins to get credits. When you get credits, you can press the “Start” or “4” button to start game. Finally, pull the plunger or press “Launch” button to launch and press the “2”, “3” button to play games.

Note:

- 1.Free Play Mode: To play a game, you must enter the game first, then press the “Coin” Button for free play.
- 2.Coin Operated Mode: To play a game, you must enter the game first, then insert coins to play game.
- 3.**Favorites List** and **Add to Favorite List** Function, this function is not available now.

To disable FX Tables:

1. Power off the machine.
2. Open the back door and pull out the usb stick.
3. Prepare usb mouse and plug in the computer.
4. Power on the machine.
5. Double left click "DISABLE FX" When Windows desktop comes out.
6. Use mouse to shutdown the computer.
7. Take off the usb mouse and plug in the usb stick.
8. Power on the computer.



To disable "Coin Button":

Coin Button can work (Free play Mode):

1. Power off the machine and open the coin door.
2. Pull out the Coin Button's microswitch.
3. To make the black/purple wire connect the microswitch's 1 terminal, make the black/purple wire connect the microswitch's 2 terminal. As picture show for you:
4. Press back the microswitch into the Coin button.



Coin Button can't work (Coin Operated Mode):

- 1&2&4 Steps are same.
3. To make the black/purple wire connect the microswitch's 2 terminal, make the black/purple wire connect the microswitch's 3 terminal.

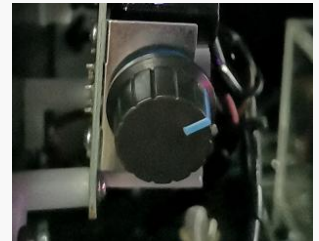
To change the Volume:

1. Open the coin door.
2. The amplifier controls can be just inside of the machine as seen above. The large central dial changes the volume, and the smaller dials will alter the bass and treble respectively. You can adjust the amplifier as you like.
3. When done, you can simply close the coin door and lock up again.



To adjust the shaker motor:

1. Open the coin door, the shaker motor's switch is on the back of the coin acceptor.
2. You can use the switch to put it have a stronger vibration or not.
3. When done, you can simply close the coin door and lock up again.



Adjusting the Feet:

The virtual pinball's feet can each be individually adjusted.

To adjust the feet, simply twist the feet in either direction to move up or down. If needed, you can use a 22 mm spanner to turn the nut to the desired level.



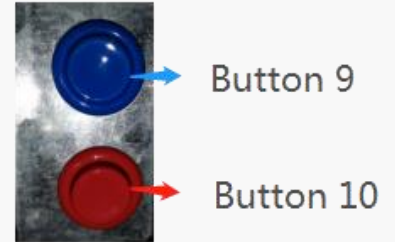
Fixing the 32" screen's cabinet:



1. Lift up the cabinet.
 2. Open the cabinet's back door.
 3. Tighten the screws. As the picture show.
- Note: The screws are in a bag for you.

To change view of Table (FX3)

1. There are two buttons back to the coin door:
2. The blue button is to change View Of Table (FX3); The red button is for spare.



Another way to change the volume

For this game machine, in addition to adjust the amplifier, there is an another way to change volume.

Note: Do not do the following without special requirements:

All the actions are to be held down "Button 10" without release.

Game Volume is divided into whole game volume and ROM volume.

How to change the whole game volume:

1. To reduce volume: First, press the "Button 10", at the same time, press "Left MagnaSave Button".
2. To increase volume: First, press the "Button 10", at the same time, press "Right MagnaSave Button".



How to change the ROM volume:

1. All the actions are to be held down "Button 10" without release.
2. Press "Right Flipper Button" to come into the volume adjusting's interface.
3. Press "Right/Left Flipper Button" to increase or reduce ROM volume.

Note: In some games, when you change the ROM volume, the DMD screen will have tip: To open the coin door.

When you see this tip, please press "Button 9" (open coin door). Then repeat 2 and 3steps.

When you finish to change the ROM volume. Please press "Button 9" (close coin door).

4. Press "Coin Button" continuously and quickly for tow times to save ROM volume.
5. Press "Exit Button" to exit game.



Adjusting the Screen:

1. Open the back door, you can see a setting board on the screen. As picture show:



2. **"MENU"** button: means Confirm or Enter ; **"ENTER"** button: means Enter or Exit

"+ and **"UP"** button: means Add or On

"- and **"DOWN"** button: means Decrease or Off

"AUTO" button: means Exit or Automatic adjust the screen.

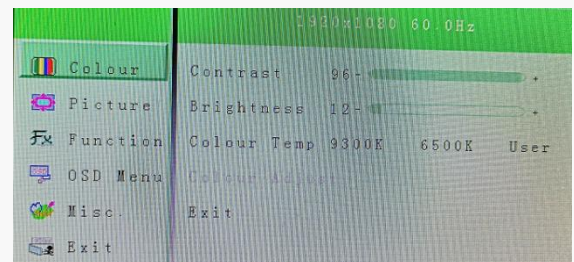
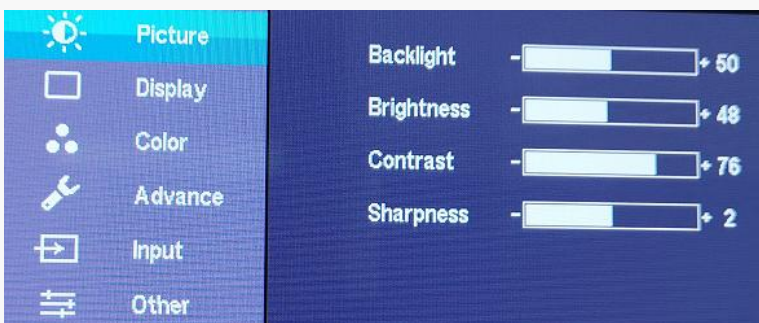
When you press "MENU" button first, then press "AUTO" button. The "AUTO" button means Exit.

When you just press "AUTO" button, the "AUTO" button means Automatic adjust the screen. This function could be use when the screen don't display full or the screen have something wrong.

"POWER" button: means Power On or Off the screen

3. How to adjust the screen:

Step 1: Press "MENU" to enter the screen's background setting. As picture show:



Step 2: Press **"+** " **"-** " **"UP"** " **"DOWN"** button to choose the parameter which you want to adjust.

Step 3: Press "MENU" or "ENTER" to Enter the parameter, press the **"+** " **"-** " **"UP"** " **"DOWN"** button to change parameter's size.

Note: When you adjust something, the screen will automatically save the change.

Troubleshooting

No Sound:

If there is no sound on your pinball machine, please check if the amplifier on the system is switched on, turned up and that the cabling going into the amplifier system is securely connected.

If problem persists after these checks, contact us.

Blank Screen:

Check the indicated light of the back screen. As picture show:



1.If the LED light is green, and the screen without image display:

It means that this screen is broken. Need to exchange an another screen.

2. If the LED light is red:

First, need to check the VGA wire connect well or not.

If has checked the wires connect well and has tried to connect them again carefully, the screen still have no image. In this time, to check the graphics card's fan and the PC power's fan. To see that if they work normally.

If the graphics card's fan and the PC power's fan doesn't work well. Need to exchange their fan.

3. If the LED light is not working:

First, need to check the screen's power cord. To see that if it connect well or not.

If the power cord is plug tightly then please try to connect another power wire which is good to see if the screen power is bad.

If the power cord has no problem, it means that the screen is broken. Need to exchange another screen.

If problem persists after these checks, contact us.

Have fun!

A stylized, high-contrast black and white illustration of the top portion of a pinball machine. It features a series of horizontal bars of varying lengths, creating a stepped, mechanical appearance. The bars are set against a white background, with the top edge of the machine curving downwards on the left side.

ENHANCED —
— **PINBALL**