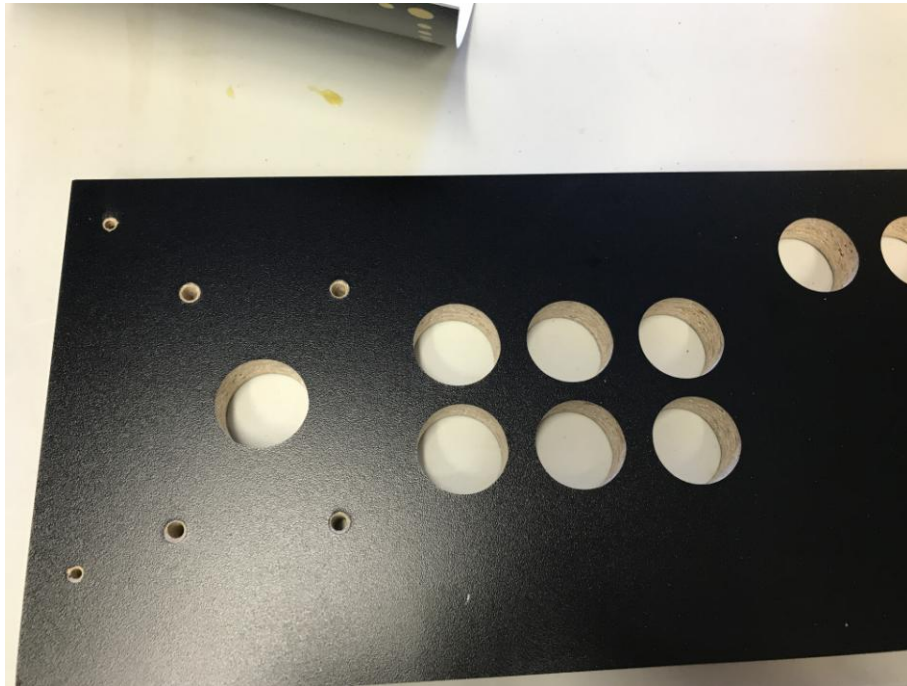


Applying Artwork to Cabinet and Control Panel.

If you use the black carriage bolts for Control Panel, you will need to taper a hold for the square base of the carriage bolt.



Next clean Control Panel with a water bottle with 99% water and a few drops of dish washing soap. Apply the artwork. Clean the bartop cabinet and apply the oversized artwork and properly orientate. Then remove excess water using a Plastic Felt Squeegee.



Cut excess artwork but leave about 1/4CM to fold under T-Molding.



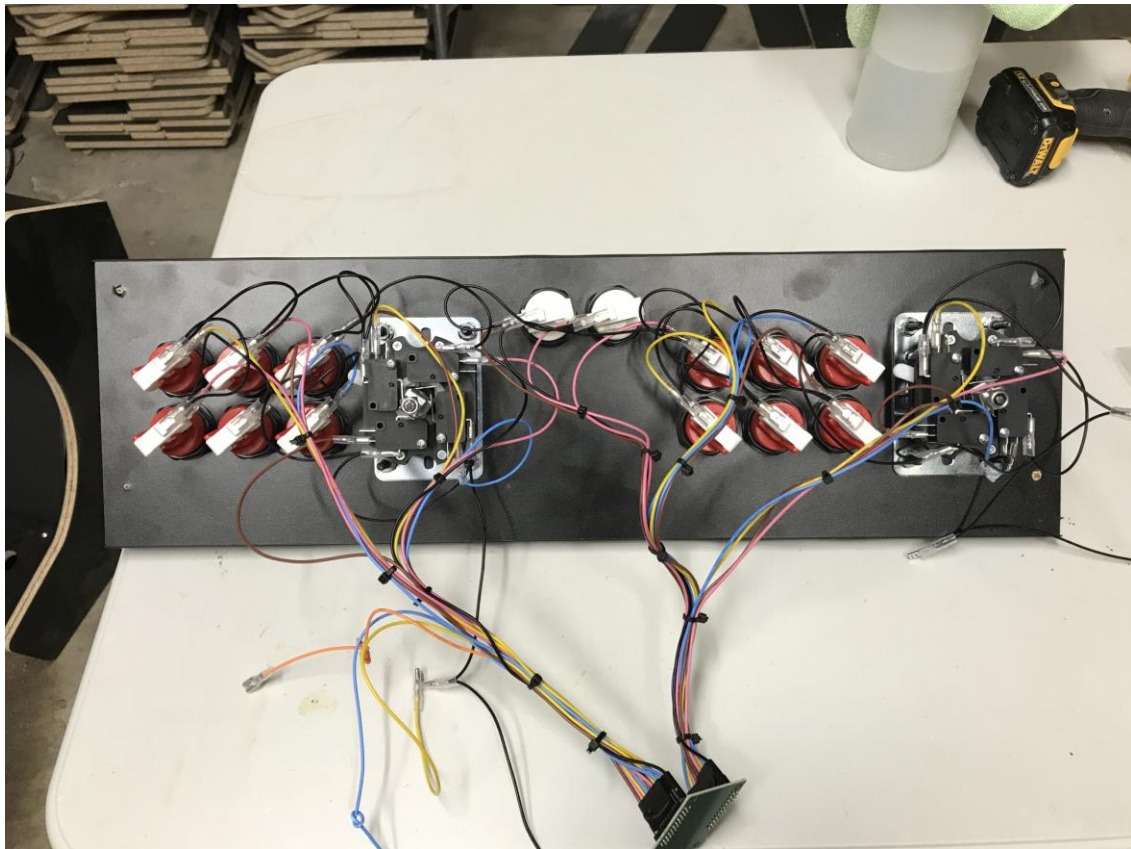
Let artwork dry for 24 hours.



Trim control panel artwork and add Joysticks and Buttons. The Control Panel has been pre-drilled for Happ Bat style Joysticks. Sanwa Joystick mounting plate (ball top joysticks) will not fit my pre-drilled holes in control panel. You will need to extend the hole in the base plate.



Using the wiring diagram, complete the Control Panel and install the T-Molding. Joysticks installed are Ultimarc Magstick Plus. They will also work with my pre-drilled holes in Control Panel.



Next install T-Molding on bartop cabinet.



Install the Admin buttons. The 2x smaller yellow buttons are for Coin 1 and Coin 2. Regular American Style buttons are too long and will not fit.



Install Control Panel from left side then push down on right side. Then screw in the 4x black screws to hold Control Panel down. Do not tighten the screws all the way down; leave a space so the artwork will not get damaged.



Installing Bezel around monitor.

Cut the black bezel to fit cabinet and monitor size. To keep bezel in place I use 3x Velcro buttons located at the base of the monitor.



Next is the LCD Plexiglass. Remove paper backing and clean with soapy water and micro-fiber cloth. I use Plexus Plexiglas Cleaner and it also helps prevent scratches.

