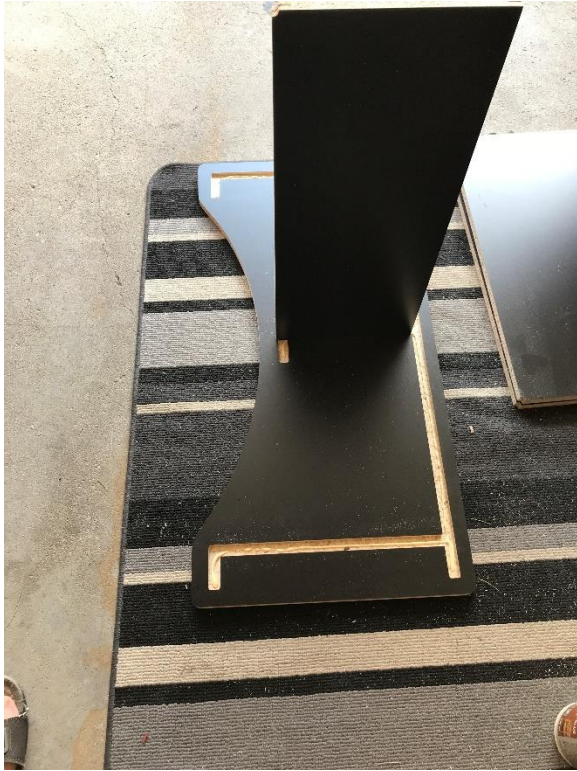


## Bartop Stand Assembly

Place panels on a clean surface, carpet or cardboard to prevent scratches. Use wood glue in slots to all panels. Then place panels according to photos below.





Take notice the taper corners. Then place the other side panel on to make sure everything is properly aligned. Next is to add corner brackets to bottom and top shelves.





Once the cabinet has been assembled and T-Molding installed you can then add the bartop mounting base. Start at the back and line up the back panel and screw in the corner brackets. You will need to trim the extra T-Molding off the bottom of the Bartop.



Here's a photo of the top mounting base for Bartop Arcade to sit on.

